

Absea Product data sheet

Product number	0621603D08
Antibody specificity	Ig gamma-4 chain C region (human IgG4)
Species reactivity	Human
UniProt	P01861
Clone number	KT209
Immunogen	Human IgG4
Antibody isotype	Mouse IgG1
Antibody form	Intact antibody
Concentration	1 mg/ml in PBS containing 0.09% sodium azide as a preservative
Cross-reactivity	Not cross-react with human IgG1, IgG2, IgG3, IgA1, IgA2, IgE and IgM
Applications	Primary antibody for ELISA.

These are applications that have been tested. It does not mean that the antibody cannot be used for other applications

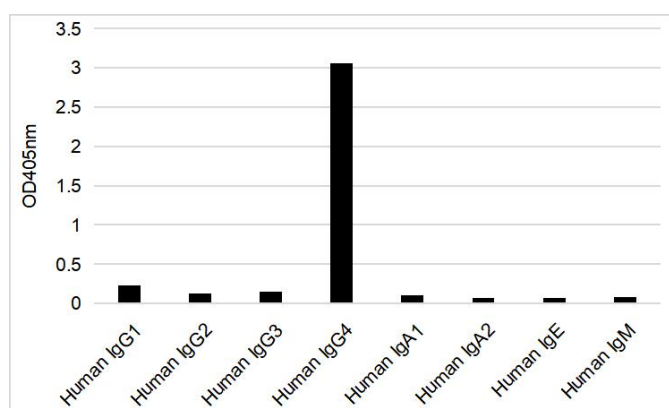


Figure 1. ELISA using plates coated with human antibodies with various isotypes.

Suggested working concentrations	ELISA: 1/1000 Optimal concentrations should be determined by the end user
Preparation	IgG is purified through a Protein A column
Store	4 °C for 1 month, -20 °C or -80°C in aliquots for longer storage. Avoid repeated freeze/thaw cycles
Safety information	This product contains sodium azide which is hazardous