

Absea Product data sheet

Product number	0624611G09
Antibody specificity	6xHis
Clone number	KT195
Immunogen	A protein antigen containing 6 his residues (HHHHHH)
Antibody isotype	Mouse IgG1
Antibody form	Intact antibody
Concentration	1 mg/ml in PBS containing 0.09% sodium azide as a preservative
Cross-reactivity	Not tested
Applications	Primary antibody for ELISA and Western blotting

These are applications that have been tested. It does not mean that the antibody cannot be used for other applications

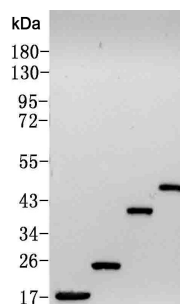


Figure 1. Western blotting using KT195 to detect four 6xhis containing proteins.

Suggested working concentrations	ELISA: 1/1000 Western blotting: 1:1000-1:5000 Optimal concentrations should be determined by the end user
Preparation	IgG is purified through a Protein A column
Store	4 °C for 1 month, -20 °C or -80°C in aliquots. Avoid repeated freeze/thaw cycles
Safety information	This product contains sodium azide which is hazardous