

Absea Product data sheet

Product number	068909H08
Antibody specificity	Ig gamma-3 chain C region (human IgG3)
Species reactivity	Human
UniProt	P01860
Clone number	KT133
Immunogen	Human IgG3
Antibody isotype	Mouse IgG1
Antibody form	Intact antibody
Concentration	1 mg/ml in PBS containing 0.09% sodium azide as a preservative
Cross-reactivity	Not cross-react with human IgG1, IgG2, IgG4, IgA, IgE and IgM
Applications	Primary antibody for ELISA. Capture antibody for sandwich ELISA. Antibody isotyping.

These are applications that have been tested. It does not mean that the antibody cannot be used for other applications

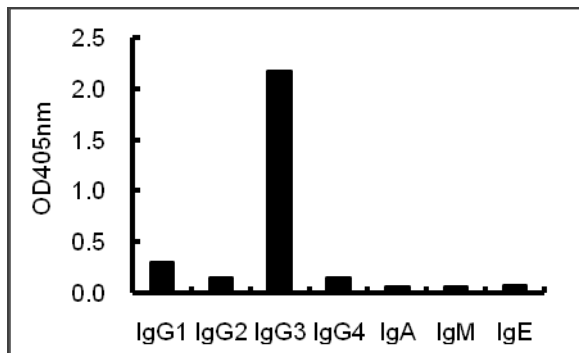


Figure 1. ELISA using plates coated with human antibodies with various isotypes.

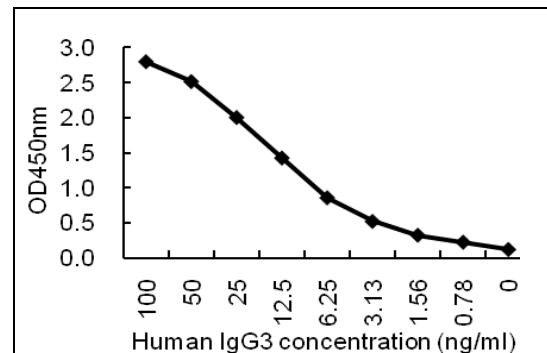


Figure 2. Sandwich ELISA for purified IgG3 using KT133 coated plate and HRP conjugated KT131.

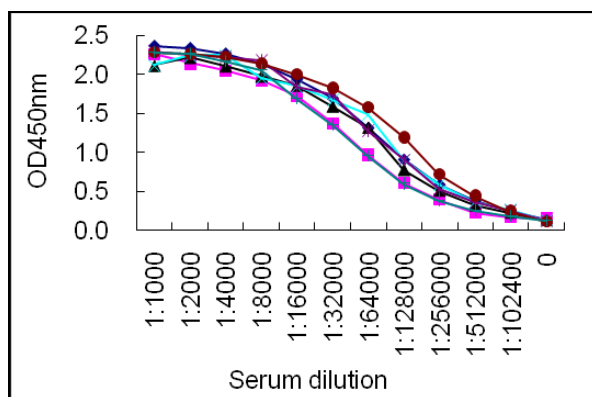


Figure 3. Sandwich ELISA for normal human serum samples

using KT133 coated plate and HRP conjugated KT131.

Suggested working concentrations	ELISA: 1/1000 Capture antibody: 5 µg/ml Optimal concentrations should be determined by the end user
Preparation	IgG is purified through a Protein A column
Store	4 °C for 1 month, -20 °C or -80°C in aliquots. Avoid repeated freeze/thaw cycles
Safety information	This product contains sodium azide which is hazardous