

Absea Product data sheet

Product number	1617002D09
Antibody specificity	GAPDH
Species reactivity	Human, rat, mouse
UniProt/GeneID	P04406/2597
Clone number	KT186
Immunogen	Synthetic peptide within the region aa 180-230 of human GAPDH.
Antibody isotype	Mouse IgG2b
Antibody form	Intact antibody
Concentration	1 mg/ml in PBS containing 0.09% sodium azide as a preservative
Cross-reactivity	Not tested
Applications	Primary antibody for Western blotting

These are applications that have been tested. It does not mean that the antibody cannot be used for other applications

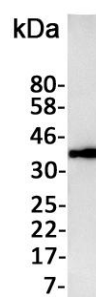


Figure 1. Western blotting against total protein from A375 cell lysate

Suggested working concentrations	Western blotting: 1/1000 – 1/10000 Optimal concentrations should be determined by the user
Preparation	IgG is purified using a Protein A column
Store	4 °C for 1 month, -20 °C or -80°C in aliquots for longer storage. Avoid repeated freeze/thaw cycles
Safety information	This product contains sodium azide which is hazardous
Disclaimer	This product is intended for research use only.