

Absea Product data sheet

Product number	020108H05
Antibody specificity	Serum albumin
Species reactivity	Human
UniProt/GenelD	P02768/213
Clone number	KT32
Immunogen	Human albumin
Antibody isotype	Mouse IgG1
Antibody form	Intact antibody
Concentration	1 mg/ml in PBS containing 0.09% sodium azide as a preservative
Cross-reactivity	Not tested
Applications	Primary antibody for ELISA and Western blotting

These are applications that have been tested. It does not mean that the antibody cannot be used for other applications.

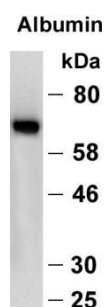


Figure 1. Western blotting for reactivity against human albumin.

Suggested working concentrations	ELISA: 1 μ g/ml Western blotting: 1/1000 - 1/10000 Optimal concentrations should be determined by the end user
Preparation	IgG is purified through a Protein A column
Store	4 °C for 1 month, -20 °C or -80°C in aliquots for longer time of storage. Avoid repeated freeze/thaw cycles
Safety information	This product contains sodium azide which is hazardous