

Absea Product data sheet

| | |
|-----------------------------|--|
| Product number | 030506B08 |
| Antibody specificity | Interleukin-6 (IL-6, IL6) |
| Species reactivity | Human |
| UniProt/GenelD | P05231/3569 |
| Clone number | KT106 |
| Immunogen | Recombinant human IL-6 |
| Antibody isotype | Mouse IgG1 |
| Antibody form | Intact antibody |
| Concentration | 1 mg/ml in PBS containing 0.09% sodium azide as a preservative |
| Cross-reactivity | Not tested |
| Applications | ELISA, Western blotting |

These are applications that have been tested. It does not mean that the antibody cannot be used for other applications

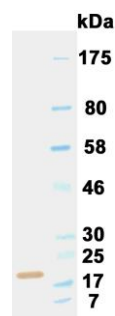


Figure 1. Western blot

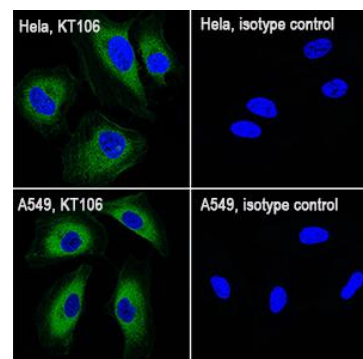


Figure 2. immunofluorescent staining

| | |
|---|--|
| Suggested working concentrations | Indirect ELISA: 1 μ g/ml Western blotting: 1/500 - 1/10000 Immunofluorescent staining: 1/100 - 1/1000 Optimal concentrations should be determined by the end user |
| Preparation | IgG is purified through a Protein A column |
| Store | 4 °C for 1 month, -20 °C or -80°C in aliquots. Avoid repeated freeze/thaw cycles |
| Safety information | This product contains sodium azide which is hazardous |