

Absea Product datasheet

Product number	118411C12H
Antibody specificity	Human kappa light chain protein (Bence Jones protein)
Species reactivity	Human
UniProt/GenelD	P01834/3514
Clone number	KT172
Immunogen	Native human kappa light chain protein
Antibody isotype	Mouse IgG1
Antibody form	Intact antibody labelled with horseradish peroxidase
Concentration	1 mg/ml in PBS containing 0.01% thimerosal as a preservative
Cross-reactivity	Not tested
Applications	Western blotting, detection antibody for sandwich ELISA (paired with KT171).

These are applications that have been tested. It does not mean that the antibody cannot be used for other applications

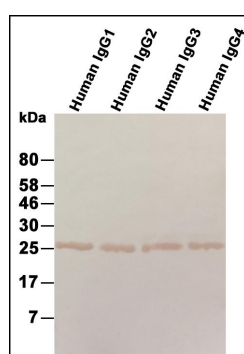


Figure 1. Western blotting using purified human IgG1, IgG2, IgG3 and IgG4

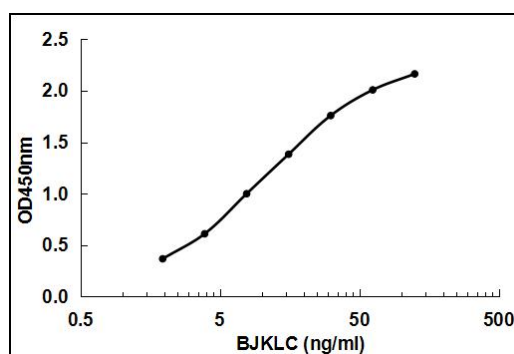


Figure2. Sandwich ELISA using KT171 as capture antibody and HRP conjugated KT172 as detection antibody

Suggested working concentrations Sandwich ELISA: 1 µg/ml
Western blotting: 1 µg/ml

Optimal concentrations should be determined by the end user

Preparation IgG is purified through a Protein A column and labelled with horseradish peroxidase

Store 4 °C for 1 month, -20 °C or -80 °C for long term. Avoid repeated freeze/thaw cycles

Safety information This product contains thimerosal which is hazardous