

# Absea Product datasheet

<b>Product number</b>	118413F05
<b>Antibody specificity</b>	Human brain S100 beta (S100B)
<b>Species reactivity</b>	Human
<b>UniProt/GenelD</b>	P04271/6285
<b>Clone number</b>	KT170
<b>Immunogen</b>	Recombinant human brain S100 beta
<b>Antibody isotype</b>	Mouse IgG1
<b>Antibody form</b>	Intact antibody
<b>Concentration</b>	1 mg/ml in PBS containing 0.09% sodium azide as a preservative
<b>Cross-reactivity</b>	Not tested
<b>Applications</b>	ELISA, capture antibody for sandwich ELISA.

These are applications that have been tested. It does not mean that the antibody cannot be used for other applications

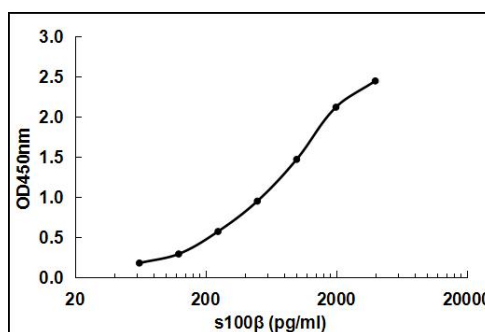


Figure 1. Sandwich ELISA using KT170 as capture antibody and HRP conjugated KT169 as detection antibody

<b>Suggested working concentrations</b>	ELISA: 1 µg/ml Sandwich ELISA: 5 µg/ml  Optimal concentrations should be determined by the end user
<b>Preparation</b>	IgG is purified through a Protein A column
<b>Store</b>	4 °C for 1 month, -20 °C or -80 °C for long term. Avoid repeated freeze/thaw cycles
<b>Safety information</b>	This product contains sodium azide which is hazardous