

# Absea Product datasheet

<b>Product number</b>	118410F04H
<b>Antibody specificity</b>	Human brain S100 beta (S100B)
<b>Species reactivity</b>	Human
<b>UniProt/GenelD</b>	P04271/6285
<b>Clone number</b>	KT169
<b>Immunogen</b>	Recombinant human brain S100 beta
<b>Antibody isotype</b>	Mouse IgG2a
<b>Antibody form</b>	Intact antibody labelled with horseradish peroxidase
<b>Concentration</b>	1 mg/ml in PBS containing 0.01% thimerosal as a preservative
<b>Cross-reactivity</b>	Not tested
<b>Applications</b>	Detection antibody for sandwich ELISA (paired with KT170).

These are applications that have been tested. It does not mean that the antibody cannot be used for other applications

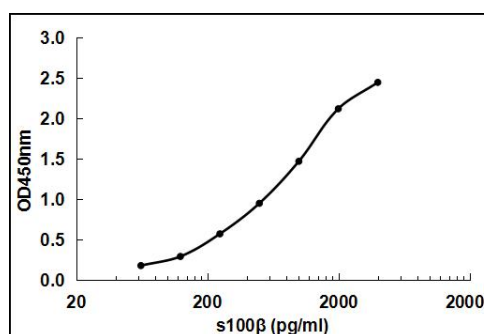


Figure 1. Sandwich ELISA using KT170 as capture antibody and HRP conjugated KT169 as detection antibody

<b>Suggested working concentrations</b>	Sandwich ELISA: 1 µg/ml Optimal concentrations should be determined by the end user
<b>Preparation</b>	IgG is purified through a Protein A column and labelled with horseradish peroxidase
<b>Store</b>	4 °C for 1 month, -20 °C or -80 °C for long term. Avoid repeated freeze/thaw cycles
<b>Safety information</b>	This product contains thimerosal which is hazardous