

Absea Product datasheet

Product number	169207G12
Antibody specificity	Human alpha-1-microglobulin (A1M)
Species reactivity	Human
UniProt/GenelD	P02760/259
Clone number	KT157
Immunogen	Native human alpha-1-microglobulin
Antibody isotype	Mouse IgG1
Antibody form	Intact antibody
Concentration	1 mg/ml in PBS containing 0.09% sodium azide as a preservative
Cross-reactivity	Not tested
Applications	Capture antibody for sandwich ELISA.

These are applications that have been tested. It does not mean that the antibody cannot be used for other applications

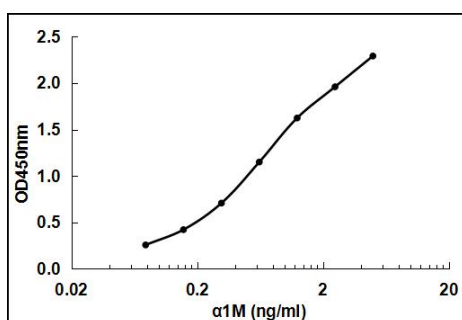


Figure 1. Sandwich ELISA using KT157 as capture antibody and HRP conjugated KT158 as detection antibody

Suggested working concentrations	Sandwich ELISA: 5 µg/ml Optimal concentrations should be determined by the end user
Preparation	IgG is purified through a Protein A column
Store	4 °C for 1 month, -20 °C or -80 °C for long term. Avoid repeated freeze/thaw cycles
Safety information	This product contains sodium azide which is hazardous