

Absea Product data sheet

Product number	0611711B12
Antibody specificity	alpha-1-Antichymotrypsin (ACT)
Species reactivity	Human
UniProt/GenelD	P01011/12
Clone number	KT146
Immunogen	ACT purified from human plasma
Antibody isotype	Mouse IgG2a
Antibody form	Intact antibody
Concentration	1 mg/ml in PBS containing 0.09% sodium azide as a preservative
Cross-reactivity	Not tested
Applications	ACT is an acute-phase plasma protein. It inhibits chymotrypsin-like serine proteases. It is elevated in inflammatory conditions, some malignancies, Crohn's disease, ulcerative colitis, and burn injuries.

KT146 can be used as primary antibody for ELISA and western blotting. These are applications that have been tested. It does not mean that the antibody cannot be used for other applications.

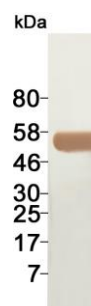


Figure 1. Western blotting result.

Suggested working concentrations	ELISA: 1 µg/ml Western blotting: 1/500 - 1/10000 Optimal concentrations should be determined by the end user
Preparation	IgG is purified from culture supernatant through a Protein A column
Store	4 °C for 1 month, -20 °C or -80°C in aliquots. Avoid repeated freeze/thaw cycles
Safety information	This product contains sodium azide which is hazardous