

Absea Product data sheet

Product number	116816G10
Antibody specificity	Troponin I, cardiac muscle (cTnI)
Species reactivity	Human cardiac troponin I
UniProt/GenelD	P19429/7137
Clone number	KT143
Immunogen	Purified human cardiac troponin I
Antibody isotype	Mouse IgG2b
Antibody form	Intact antibody
Concentration	1 mg/ml in PBS containing 0.09% sodium azide as a preservative
Cross-reactivity	Not tested
Applications	ELISA, Western blotting, capture antibody for sandwich ELISA.

These are applications that have been tested. It does not mean that the antibody cannot be used for other applications

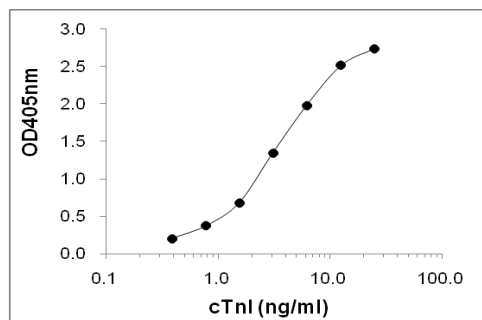


Figure 1. Sandwich ELISA using KT143 coated plate and HRP conjugated KT142

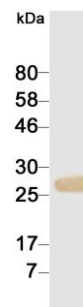


Figure 2. Western blotting result

Suggested working concentrations	ELISA: 1 μ g/ml Western blotting: 1/500 - 1/5000 Capture antibody: 1 μ g/ml Optimal concentrations should be determined by the end user
Preparation	IgG is purified through a Protein A column
Store	4 $^{\circ}$ C for 1 month, -20 $^{\circ}$ C or -80 $^{\circ}$ C in aliquots. Avoid repeated freeze/thaw cycles
Safety information	This product contains sodium azide which is hazardous