

Absea Product data sheet

Product number	168215A10
Antibody specificity	Ferritin
Species reactivity	Human ferritin
Clone number	KT148
Immunogen	Purified human ferritin
Antibody isotype	Mouse IgG2a
Antibody form	Intact antibody
Concentration	1 mg/ml in PBS containing 0.09% sodium azide as a preservative
Cross-reactivity	Not tested
Applications	ELISA, Western blotting, capture antibody for sandwich ELISA.

These are applications that have been tested. It does not mean that the antibody cannot be used for other applications

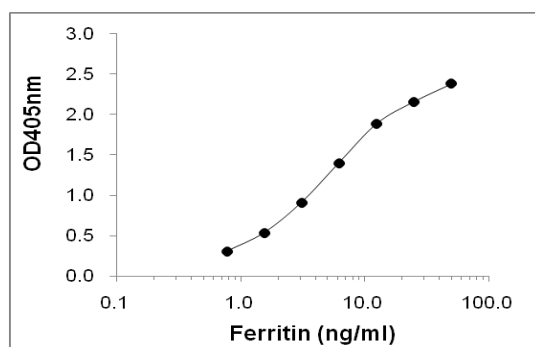


Figure 1. Sandwich ELISA using KT148 coated plate and HRP conjugated KT147

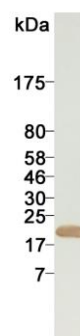


Figure 2. Western blotting result

Suggested working concentrations	ELISA: 1 μ g/ml Western blotting: 1/500 - 1/5000 Capture antibody: 3 μ g/ml Optimal concentrations should be determined by the end user
Preparation	IgG is purified through a Protein A column
Store	4 $^{\circ}$ C for 1 month, -20 $^{\circ}$ C or -80 $^{\circ}$ C in aliquots. Avoid repeated freeze/thaw cycles
Safety information	This product contains sodium azide which is hazardous