

# Absea Product data sheet

<b>Product number</b>	116808G02H
<b>Antibody specificity</b>	Troponin I, cardiac muscle (cTnI)
<b>Species reactivity</b>	Human cardiac troponin I
<b>UniProt/GenelD</b>	P19429/7137
<b>Clone number</b>	KT142
<b>Immunogen</b>	Purified human cardiac troponin I
<b>Antibody isotype</b>	Mouse IgG1
<b>Antibody form</b>	Intact antibody labelled with horseradish peroxidase
<b>Concentration</b>	1 mg/ml in PBS containing 0.01% thimerosal as a preservative
<b>Cross-reactivity</b>	Not tested
<b>Applications</b>	Western blotting; detection antibody for sandwich ELISA (paired with KT143).

These are applications that have been tested. It does not mean that the antibody cannot be used for other applications

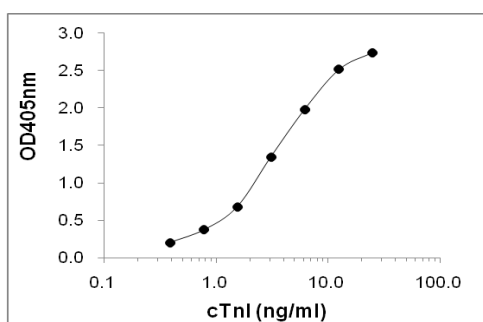


Figure 1. Sandwich ELISA using KT143 coated plate and HRP conjugated KT142

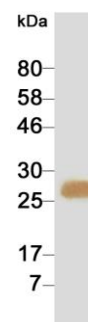


Figure 2. Western blotting result

<b>Suggested working concentrations</b>	Western blotting: 1/500 - 1/5000 Detection antibody: 1 µg/ml  Optimal concentrations should be determined by the end user
<b>Preparation</b>	IgG is purified through a Protein A column and labelled with horseradish peroxidase
<b>Store</b>	4 °C for 1 month, -20 °C or -80°C in aliquots. Avoid repeated freeze/thaw cycles
<b>Safety information</b>	This product contains thimerosal which is hazardous