

Absea Product data sheet

Product number	068709G12
Antibody specificity	Ig gamma-4 chain C region (human IgG4)
Species reactivity	Human
UniProt	P01861
Clone number	KT130
Immunogen	Human IgG4
Antibody isotype	Mouse IgG1
Antibody form	Intact antibody
Concentration	1 mg/ml in PBS containing 0.09% sodium azide as a preservative
Cross-reactivity	Not cross-react with human IgG1, IgG2, IgG3, IgA, IgE and IgM
Applications	Primary antibody for ELISA and Western blotting. Capture antibody for sandwich ELISA. Antibody isotyping.

These are applications that have been tested. It does not mean that the antibody cannot be used for other applications

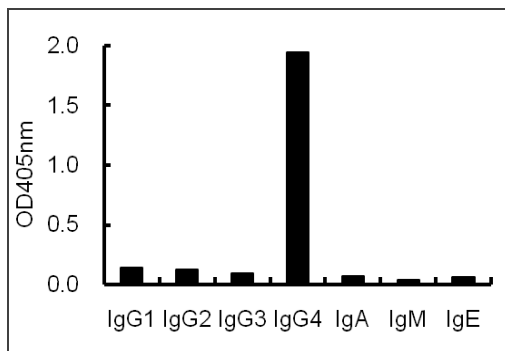


Figure 1. ELISA using plates coated with human antibodies with various isotypes.

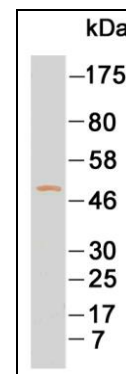


Figure 2. Western blotting using purified IgG4 under reducing conditions

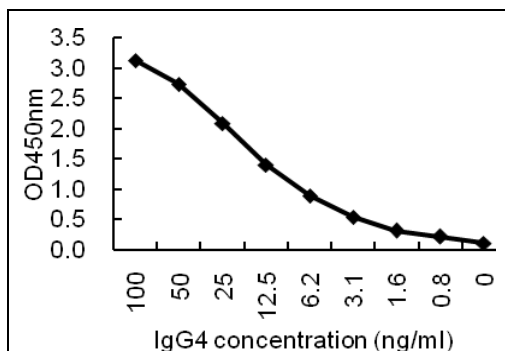


Figure 3. Sandwich ELISA for purified IgG4 using KT130 coated plate and HRP conjugated KT132.

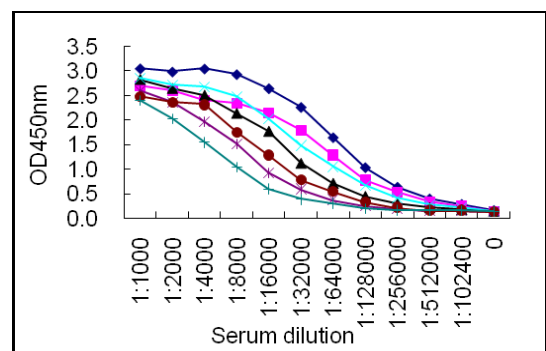


Figure 4. Sandwich ELISA for normal human serum samples using KT130 coated plate and HRP conjugated KT132.

Suggested working concentrations	ELISA: 1/1000 Western blotting: 1/500 - 1/10000 Capture antibody: 5 µg/ml Optimal concentrations should be determined by the end user
Preparation	IgG is purified through a Protein A column
Store	4 °C for 1 month, -20 °C or -80°C in aliquots. Avoid repeated freeze/thaw cycles
Safety information	This product contains sodium azide which is hazardous