

Absea Product data sheet

Product number	069203C11
Antibody specificity	Alpha-fetoprotein (AFP)
Species reactivity	Human
UniProt/GenelD	P02771/174
Clone number	KT137
Immunogen	Purified native human AFP
Antibody isotype	Mouse IgG1
Antibody form	Intact antibody
Concentration	1 mg/ml in PBS containing 0.09% sodium azide as a preservative
Cross-reactivity	Not tested
Applications	Capture antibody for sandwich ELISA.

These are applications that have been tested. It does not mean that the antibody cannot be used for other applications

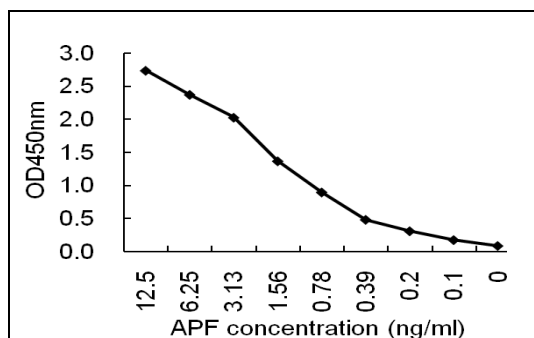


Figure 1. Sandwich ELISA using KT137 coated plate and HRP conjugated KT136.

Suggested working concentrations	Capture antibody: 3 μ g/ml Optimal concentrations should be determined by the end user
Preparation	IgG is purified through a Protein A column
Store	4 °C for 1 month, -20 °C or -80°C in aliquots. Avoid repeated freeze/thaw cycles
Safety information	This product contains sodium azide which is hazardous