

Absea Product data sheet

Product number	069210F12
Antibody specificity	Alpha-fetoprotein (AFP)
Species reactivity	Human
UniProt/GenelD	P02771/174
Clone number	KT136
Immunogen	Purified native human AFP
Antibody isotype	Mouse IgG2a
Antibody form	Intact antibody
Concentration	1 mg/ml in PBS containing 0.09% sodium azide as a preservative
Cross-reactivity	Not tested
Applications	Primary antibody for ELISA and Western blotting.

These are applications that have been tested. It does not mean that the antibody cannot be used for other applications

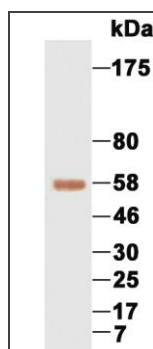


Figure 1. Western blotting using purified AFP

Suggested working concentrations	ELISA: 1/1000 Western blotting: 1/500 - 1/10000 Optimal concentrations should be determined by the end user
Preparation	IgG is purified through a Protein A column
Store	4 °C for 1 month, -20 °C or -80°C in aliquots. Avoid repeated freeze/thaw cycles
Safety information	This product contains sodium azide which is hazardous