

Absea Product data sheet

Product number	167214B12
Antibody specificity	Beta-2-microglobulin (B2M)
Species reactivity	Human
UniProt/GenelD	P61769/567
Clone number	KT134
Immunogen	Purified native human B2M
Antibody isotype	Mouse IgG1
Antibody form	Intact antibody
Concentration	1 mg/ml in PBS containing 0.09% sodium azide as a preservative
Cross-reactivity	Not tested
Applications	Primary antibody for ELISA, Western blotting and sandwich ELISA.

These are applications that have been tested. It does not mean that the antibody cannot be used for other applications

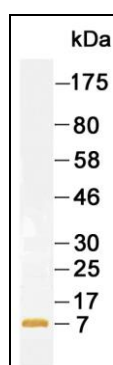


Figure 1. Western blotting using purified B2M.

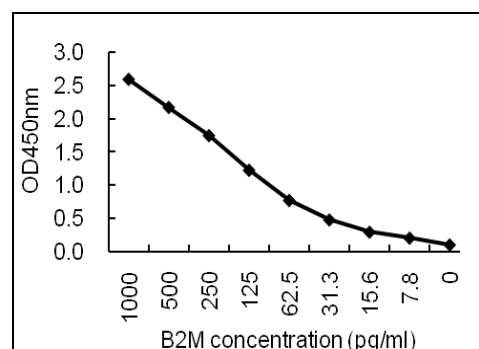


Figure 2. Sandwich ELISA for purified B2M using KT134 coated plate and HRP conjugated KT135.

Suggested working concentrations	ELISA: 1/1000 Western blotting: 1/500 - 1/10000 Capture antibody: 3 µg/ml Optimal concentrations should be determined by the end user
Preparation	IgG is purified through a Protein A column
Store	4 °C for 1 month, -20 °C or -80°C in aliquots. Avoid repeated freeze/thaw cycles
Safety information	This product contains sodium azide which is hazardous