

# Absea Product data sheet

|                             |  |
|-----------------------------|--|
| <b>Product number</b>       | 116110B05  |
| <b>Antibody specificity</b> | Ig alpha chain C region (mouse IgA)  |
| <b>Species reactivity</b>   | Mouse  |
| <b>UniProt</b>              | P01878   |
| <b>Clone number</b>         | KT129  |
| <b>Immunogen</b>            | Mouse IgA  |
| <b>Antibody isotype</b>     | Rat IgG2a  |
| <b>Antibody form</b>        | Intact antibody  |
| <b>Concentration</b>        | 1 mg/ml in PBS containing 0.09% sodium azide as a preservative                   |
| <b>Cross-reactivity</b>     | Not react with mouse antibodies with other isotypes                              |
| <b>Applications</b>         | ELISA and antibody isotyping. This antibody cannot be used for Western blotting. |

These are applications that have been tested. It does not mean that the antibody cannot be used for other applications

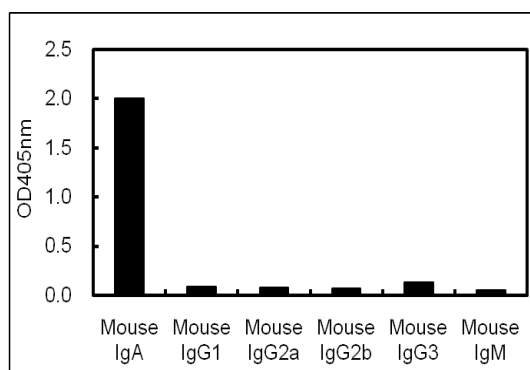


Figure 1. ELISA using plates coated with mouse antibodies with various isotypes.

|   |  |
|---|--|
| <b>Suggested working concentrations</b> | ELISA: 1/1000<br>Optimal concentrations should be determined by the end user     |
| <b>Preparation</b>                      | IgG is purified through a Protein G column                                       |
| <b>Store</b>                            | 4 °C for 1 month, -20 °C or -80°C in aliquots. Avoid repeated freeze/thaw cycles |
| <b>Safety information</b>               | This product contains sodium azide which is hazardous                            |