

# Absea Product data sheet

<b>Product number</b>	068715G06H
<b>Antibody specificity</b>	IgG1, IgG2, IgG3, IgG4
<b>Species reactivity</b>	Human
<b>Clone number</b>	KT131
<b>Immunogen</b>	Human IgG
<b>Antibody isotype</b>	Mouse IgG2a
<b>Antibody form</b>	Intact antibody labelled with horseradish peroxidase
<b>Concentration</b>	1 mg/ml in PBS containing 0.01% thimerosal as a preservative
<b>Cross-reactivity</b>	Not cross-react with human IgA, IgE and IgM
<b>Applications</b>	ELISA, Western blotting and detection antibody for sandwich ELISA

These are applications that have been tested. It does not mean that the antibody cannot be used for other applications

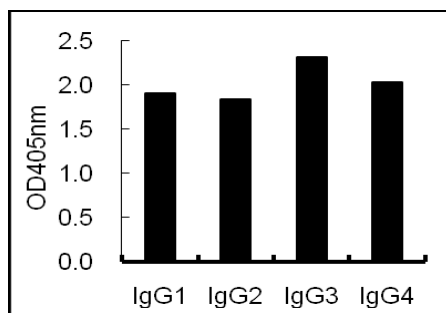


Figure 1. ELISA using plates coated with human IgG.

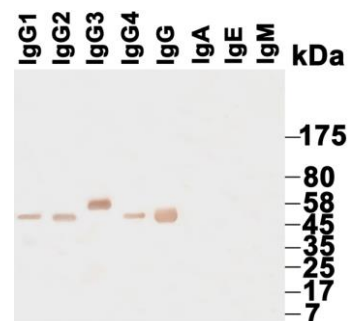


Figure 2. Western blotting using various purified immunoglobulins.

<b>Suggested working concentrations</b>	ELISA: 1/1000 Detection antibody: 1/1000 Western blotting: 1/500-1/10000
	Optimal concentrations should be determined by the end user
<b>Preparation</b>	IgG is purified through a Protein A column and labelled with horseradish peroxidase
<b>Store</b>	4 °C for 1 month, -20 °C or -80°C in aliquots. Avoid repeated freeze/thaw cycles
<b>Safety information</b>	This product contains thimerosal which is hazardous