

Absea Product data sheet

Product number	000104C06
Antibody specificity	Ig alpha-1 chain C region and Ig alpha-2 chain C region (IgA1, IgA2)
Species reactivity	Human
UniProt	P01876, P01877
Clone number	KT41
Immunogen	Recombinant human IgA2
Antibody isotype	Mouse IgG1
Antibody form	Intact antibody
Concentration	1 mg/ml in PBS containing 0.09% sodium azide as a preservative
Cross-reactivity	React with IgA, not cross-react with human IgG and recombinant human IgG1, IgG2, IgG3, IgG4, IgE and IgM
Applications	Capture antibody for sandwich ELISA

These are applications that have been tested. It does not mean that the antibody cannot be used for other applications.

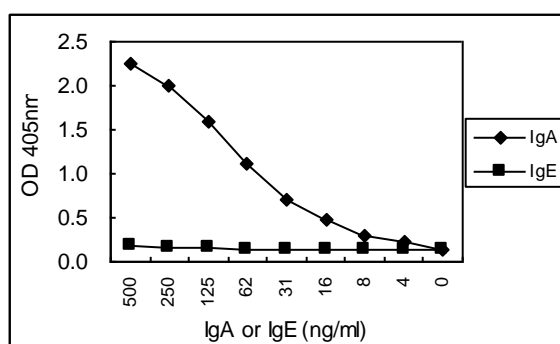


Figure 1. Sandwich ELISA for purified IgA2 using KT41 coated plate and HRP conjugated KT40. IgE is a negative control.

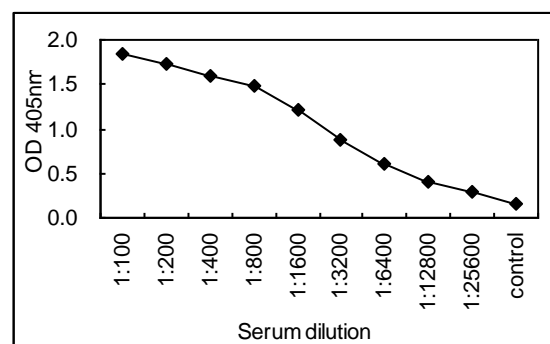


Figure 2. Sandwich ELISA for human serum using KT41 coated plate and HRP conjugated KT40.

Suggested working concentrations	Sandwich ELISA: 5 µg/ml
Preparation	IgG is purified through a Protein A column
Store	4 °C for 1 month, -20 °C or -80°C in aliquots. Avoid repeated freeze/thaw cycles
Safety information	This product contains sodium azide which is hazardous