

# Absea Product data sheet

<b>Product number</b>	062607A06
<b>Antibody specificity</b>	Immunoglobulin J chain (IGJ)
<b>Species reactivity</b>	Human
<b>UniProt/GenelD</b>	P01591/3512
<b>Clone number</b>	KT109
<b>Immunogen</b>	Recombinant human J chain
<b>Antibody isotype</b>	Mouse IgG2b
<b>Antibody form</b>	Intact antibody
<b>Concentration</b>	1 mg/ml in PBS containing 0.09% sodium azide as a preservative
<b>Cross-reactivity</b>	Not tested
<b>Applications</b>	Primary antibody for ELISA, Western blotting and immunohistochemistry

These are applications that have been tested. It does not mean that the antibody cannot be used for other applications.

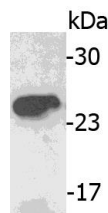


Figure 1. Western blotting using saliva

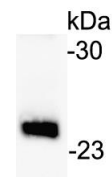


Figure 2. Western blotting using purified serum IgA.

<b>Suggested working concentrations</b>	ELISA: 1/1000 Western blotting: 1/500 – 1/10000 Immunohistochemistry: 1/100  Optimal concentrations should be determined by the end user
<b>Preparation</b>	IgG is purified through a Protein A column
<b>Store</b>	4 °C for 1 month, -20 °C or -80°C in aliquots. Avoid repeated freeze/thaw cycles
<b>Safety information</b>	This product contains sodium azide which is hazardous