

Absea Product data sheet

Product number	031801A04
Antibody specificity	Ig gamma-1 chain C region (IgG1)
Species reactivity	Human
Uniprot	P01857
Clone number	KT46
Immunogen	A fusion protein contains human IgG1 Fc
Antibody isotype	Rat IgG2a
Antibody form	Intact antibody
Concentration	1 mg/ml in PBS containing 0.09% sodium azide as a preservative
Cross-reactivity	Not cross-react with human IgG2, IgG3 and IgG4, IgA, IgE and IgM.
Applications	Primary antibody for ELISA; capture antibody for sandwich ELISA (paired with KT47/HRP)

These are applications that have been tested. It does not mean that the antibody cannot be used for other applications

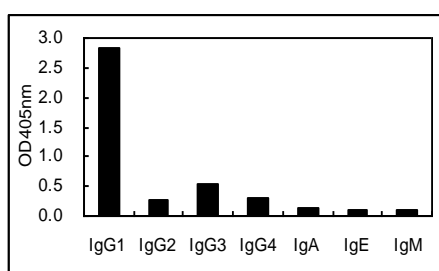


Figure 1. Cross-reactivity test

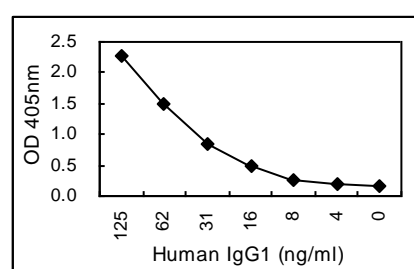


Figure 2. Sandwich ELISA using KT46 coated plate and HRP conjugated KT47.

Suggested working concentrations	ELISA: 1 μ g/ml Sandwich ELISA: 5 μ g/ml for coating plates
	Optimal concentrations should be determined by the end user
Preparation	IgG is purified through a Protein G column
Store	4 °C for 1 month, -20 °C or -80°C in aliquots. Avoid repeated freeze/thaw cycles
Safety information	This product contains sodium azide which is hazardous