

# Absea Product data sheet

<b>Product number</b>	030809A02H
<b>Antibody specificity</b>	Fibrinogen
<b>Species reactivity</b>	Human
<b>Clone number</b>	KT10
<b>Immunogen</b>	Fibrinogen purified from human blood containing $\alpha$ , $\beta$ and $\gamma$ chains
<b>Antibody isotype</b>	Rat IgG1
<b>Antibody form</b>	Intact antibody labelled with horseradish peroxidase
<b>Concentration</b>	1 mg/ml in PBS containing 0.01% thimerosal as a preservative
<b>Cross-reactivity</b>	Not tested
<b>Recommended applications</b>	Detection antibody for sandwich ELISA (paired with KT9) These are applications that have been tested. It does not mean that the antibody cannot be used for other applications

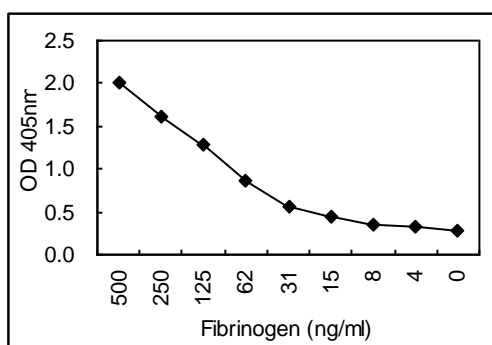


Figure 1. Sandwich ELISA using KT9 coated plate and HRP conjugated KT10.

<b>Suggested working concentrations</b>	Sandwich ELISA: 1/1000 - 1/4000 Optimal concentrations should be determined by the end user
<b>Preparation</b>	IgG is purified from culture supernatant through a Protein G column and conjugated with horseradish peroxidase
<b>Store</b>	4 °C for 1 month, -20 °C or -80°C in aliquots. Avoid repeated freeze/thaw cycles
<b>Safety information</b>	This product contains thimerosal which is hazardous