

Absea Product data sheet

Product number	030202D04H
Antibody specificity	IgG1, IgG2, IgG3 and IgG4
Species reactivity	Human
Clone number	KT47
Immunogen	A fusion protein contains human IgG Fc
Antibody isotype	Mouse IgG1
Antibody form	Intact antibody labelled with horseradish peroxidase
Concentration	1 mg/ml in PBS containing 0.01% thimerosal as a preservative
Cross-reactivity	Not cross-react with human IgA, IgE and IgM.
Applications	Detection antibody for Sandwich ELISA (paired with KT46 or KT48)

These are applications that have been tested. It does not mean that the antibody cannot be used for other applications

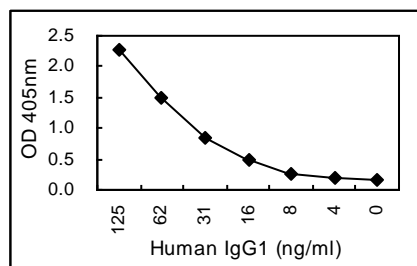


Figure 1. Sandwich ELISA using KT46 coated plate and HRP conjugated KT47.

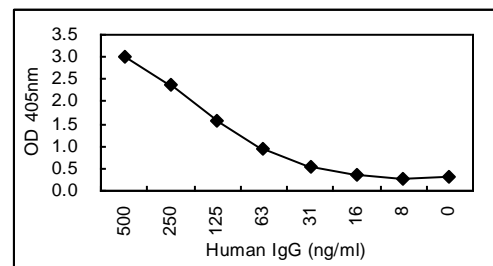


Figure 2. Sandwich ELISA using KT48 coated plate and HRP conjugated KT47.

Suggested working concentrations	Sandwich ELISA as detection antibody: 1/1000 Optimal concentrations should be determined by the end user
Preparation	IgG is purified through a Protein A column and labelled with horseradish peroxidase
Store	4 °C for 1 month, -20 °C or -80°C in aliquots. Avoid repeated freeze/thaw cycles
Safety information	This product contains thimerosal which is hazardous