

Absea Product data sheet

Product number	030105B03H
Antibody specificity	Pro-epidermal growth factor (EGF)
Species reactivity	Human
UniProt/GenelD	P01133/1950
Clone number	KT2
Immunogen	Recombinant human EGF
Antibody isotype	Mouse IgG2a
Antibody form	Intact antibody labelled with horseradish peroxidase
Concentration	1 mg/ml in PBS containing 0.01% thimerosal as a preservative
Cross-reactivity	Not tested
Applications	Detection antibody for Sandwich ELISA (paired with KT57)

These are applications that have been tested. It does not mean that the antibody cannot be used for other applications

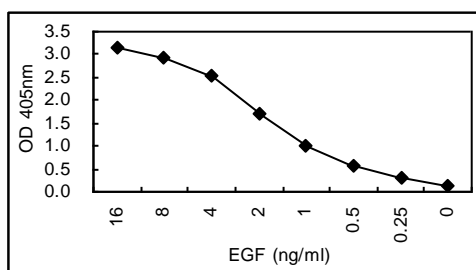


Figure 1. Sandwich ELISA using KT57 coated plate and HRP conjugated KT2.

Suggested working concentrations	Sandwich ELISA: 1/1000 - 1/2000 dilution as detection antibody Optimal concentrations should be determined by the end user
Preparation	IgG is purified through a Protein A column and labelled with horseradish peroxidase
Store	4 °C for 1 month, -20 °C or -80°C in aliquots. Avoid repeated freeze/thaw cycles
Safety information	This product contains thimerosal which is hazardous