

Absea Product data sheet

Product number	020108H05H
Antibody specificity	Serum albumin
Species reactivity	Human
UniProt/GenelD	P02768/213
Clone number	KT32
Immunogen	Human albumin
Antibody isotype	Mouse IgG1
Antibody form	Intact antibody conjugated with horseradish peroxidase
Concentration	1 mg/ml in PBS containing 0.01% thimerosal as a preservative
Cross-reactivity	Not tested
Recommended applications	Detection antibody for sandwich ELISA (paired with KT11) These are applications that have been tested. It does not mean that the antibody cannot be used for other applications.

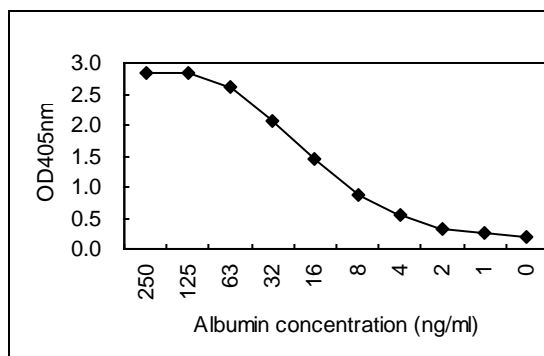


Figure 1. Sandwich ELISA using KT11 and KT32/HRP pairs

Suggested working concentrations	Sandwich ELISA: 1/2000 - 1/4000
Preparation	Antibody is purified through a Protein A column and labelled with horseradish peroxidase.
Store	4 °C for 1 month, -20 °C or -80°C in aliquots. Avoid repeated freeze/thaw cycles
Safety information	This product contains thimerosal which is hazardous