

Absea Product data sheet

Product number	020105G12
Antibody specificity	Serum albumin
Species reactivity	Human
UniProt/GenelD	P02768/213
Clone number	KT11
Immunogen	Human albumin
Antibody isotype	Mouse IgG1
Antibody form	Intact antibody
Concentration	1 mg/ml in PBS containing 0.09% sodium azide as a preservative
Cross-reactivity	Not tested
Applications	Primary antibody for ELISA and Western blotting; capture antibody for sandwich ELISA (paired with KT32/HRP)

These are applications that have been tested. It does not mean that the antibody cannot be used for other applications.

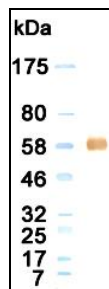


Figure 1. Western blotting result

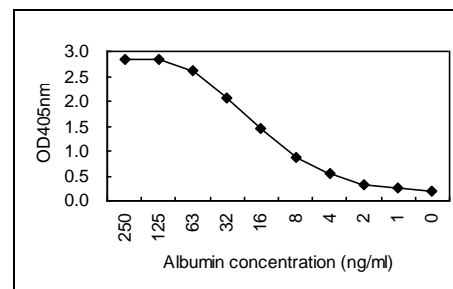


Figure 2. Sandwich ELISA using KT11 and KT32/HRP pairs

Suggested working concentrations	ELISA: 1 µg/ml Sandwich ELISA: 1-3 µg/ml for coating plates Western blotting: 1/500 - 1/10000 Optimal concentrations should be determined by the end user
Preparation	IgG is purified through a Protein A column
Store	4 °C for 1 month, -20 °C or -80°C in aliquots. Avoid repeated freeze/thaw cycles
Safety information	This product contains sodium azide which is hazardous