

# Absea Product data sheet

<b>Product number</b>	010106E09H
<b>Antibody specificity</b>	Ig alpha-1 chain C region and Ig alpha-2 chain C region (IgA1, IgA2)
<b>Species reactivity</b>	Human
<b>UniProt</b>	P01876, P01877
<b>Clone number</b>	KT40
<b>Immunogen</b>	Recombinant human IgA2
<b>Antibody isotype</b>	Mouse IgG1
<b>Antibody form</b>	Intact antibody labelled with horseradish peroxidase
<b>Concentration</b>	1 mg/ml in PBS containing 0.01% thimerosal as a preservative
<b>Cross-reactivity</b>	Not cross-react with recombinant human IgG1, IgG2, IgG3, IgG4, IgM and IgE
<b>Applications</b>	Detection antibody for sandwich ELISA (paired with KT41)

These are applications that have been tested. It does not mean that the antibody cannot be used for other applications

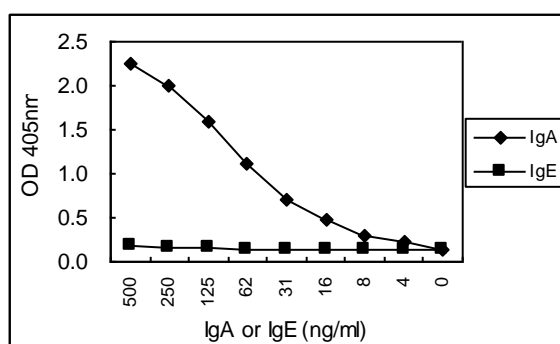


Figure 1. Sandwich ELISA for purified IgA2 using KT41 coated plate and HRP conjugated KT40. IgE is a negative control.

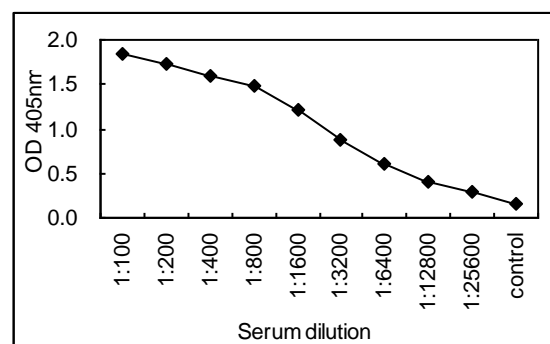


Figure 2. Sandwich ELISA for human serum using KT41 coated plate and HRP conjugated KT40.

<b>Suggested working concentrations</b>	Sandwich ELISA: 1/1000 Optimal concentrations should be determined by the end user
<b>Preparation</b>	IgG is purified through a Protein A column and labelled with horseradish peroxidase
<b>Store</b>	4 °C for 1 month, -20 °C or -80°C in aliquots. Avoid repeated freeze/thaw cycles
<b>Safety information</b>	This product contains 0.01% thimerosal which is hazardous