

Absea Product data sheet

Product number	000104A06
Antibody specificity	Ig mu chain C region (IgM)
Species reactivity	Human
UniProt	P01871
Clone number	KT16
Immunogen	Recombinant human IgM
Antibody isotype	Mouse IgG1
Antibody form	Intact antibody
Concentration	1 mg/ml in PBS containing 0.09% sodium azide as a preservative
Cross-reactivity	Not cross-react with human IgG and recombinant human IgG1, IgG2, IgG3, IgG4, IgA and IgE
Applications	Primary antibody for ELISA, capture antibody in sandwich ELISA (paired with KT38/HRP)

These are applications that have been tested. It does not mean that the antibody cannot be used for other applications

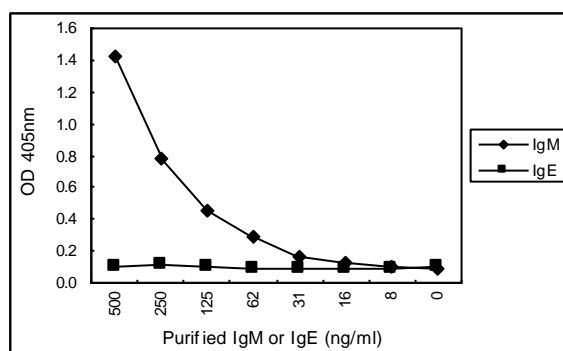


Figure 1. Sandwich ELISA for purified IgM using KT16 coated plate and HRP conjugated KT38. IgE is a negative control.

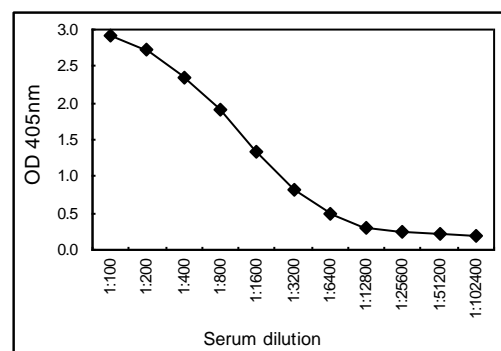


Figure 2. Sandwich ELISA for human serum using KT16 coated plate and HRP conjugated KT38.

Suggested working concentrations	Indirect ELISA: 1 µg/ml Sandwich ELISA: 5 µg/ml
Preparation	IgG is purified through a Protein A column
Store	4 °C for 1 month, -20 °C or -80°C in aliquots. Avoid repeated freeze/thaw cycles
Safety information	This product contains sodium azide which is hazardous