

Absea Product data sheet

Product number	000102A06H
Antibody specificity	Ig mu chain C region (IgM)
Species reactivity	Human
UniProt	P01871
Clone number	KT38
Immunogen	Recombinant human IgM
Antibody isotype	Mouse IgG1
Antibody form	Intact antibody labelled with horseradish peroxidase
Concentration	1 mg/ml in PBS containing 0.01% thimerosal as a preservative
Cross-reactivity	Not cross-react with human IgG and recombinant human IgG1, IgG2, IgG3, IgG4, IgA and IgE
Applications	Detection antibody for Sandwich ELISA (paired with KT16), ELISA for IgM isotyping

These are applications that have been tested. It does not mean that the antibody cannot be used for other applications

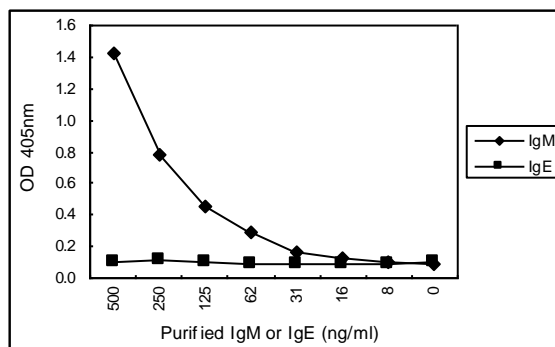


Figure 1. Sandwich ELISA for purified IgM using KT16 coated plate and HRP conjugated KT38. IgE is a negative control.

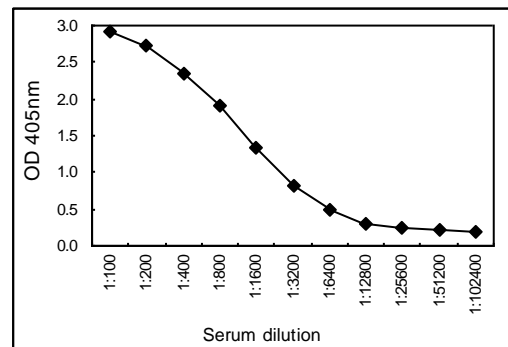


Figure 2. Sandwich ELISA for human serum using KT16 coated plate and HRP conjugated KT38.

Suggested working concentrations	Sandwich ELISA: 1/1000 dilution as detection antibody Optimal concentrations should be determined by the end user
Preparation	IgG is purified through a Protein A column and labelled with horseradish peroxidase
Store	4 °C for 1 month, -20 °C or -80°C in aliquots. Avoid repeated freeze/thaw cycles
Safety information	This product contains thimerosal which is hazardous